



Smart[®]
Installation Tool



SM-FT-2000 Banding Tool Instructions

READ ALL INSTRUCTIONS BEFORE OPERATING HCL BANDING TOOLS

SM-FT-2000-13

Suitable for:
Smart[®] Band 7mm (1/4")
Smart[®] Tie 10mm (3/8")

SM-FT-2000-19

Suitable for:
Smart[®] Band 19mm (3/4")
Smart[®] Tie 20mm (3/4")

SM-FT-2000-32

Suitable for:
Smart[®] Band 32mm (1 1/4")
Smart[®] Tie 32mm (1 1/4")

Incorporating both tightening and cutting mechanisms, the tool is fully corrosion resistant, lightweight, ergonomic and easy to use, ensuring that Smart[®] Band and Smart[®] Tie can be fitted quickly and efficiently.

Operating Instructions



STEP 1: After hand tightening the band and buckle assembly, pass the tool over the excess and locate against the buckle. Squeeze handles together to tighten further.*

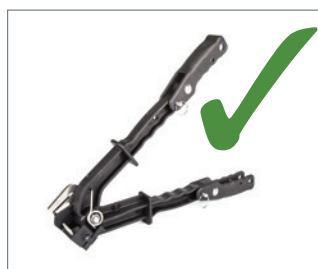


STEP 2: Trim off excess band using cutting blade.*



SM-FT-2000-32

Do not operate the tool with the handles in the closed position.



SM-FT-2000-32

Ensure that the extension handles are folded out and fixed in the operational position prior to use.

***Risk of pinch injury**

Maintenance

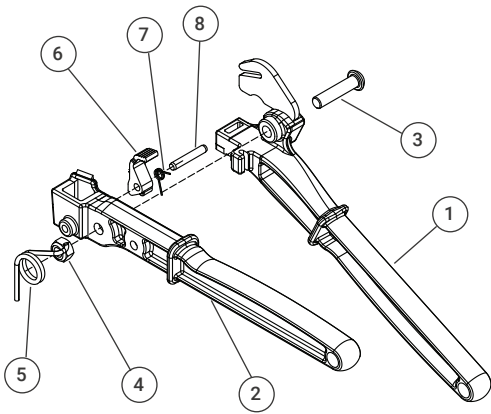
Although fully corrosion resistant, clean and lubricate the tool regularly to maximise its working life, especially in salt water environments.

**IMPORTANT –
DO NOT DESTROY**

It is the customer's responsibility to have all operators and service personnel read and understand this manual.

For additional copies please contact HCL or download from www.hcl-clamping.co.uk



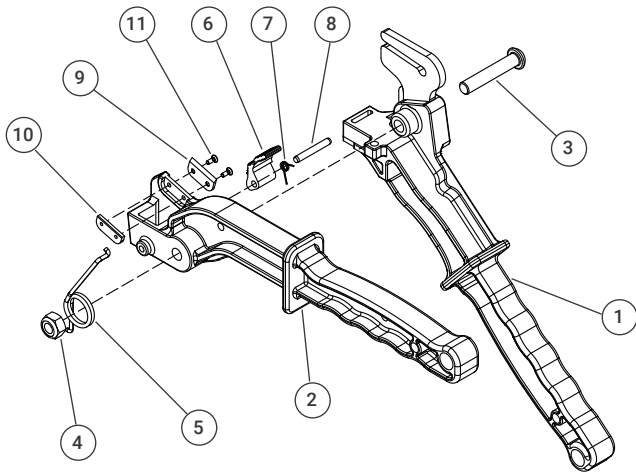


SM-FT-2000-13

| Item | Part Number | Title | Qty |
|------|---------------------|-------------------------------------------------|-----|
| 1 | ASM1116 | Fixed Handle, Overmoulded Assembly, Generic | 1 |
| 2 | ASM1117 | Moving Handle Assembly, Generic | 1 |
| 3 | BHS_M8X35_SS | Buttonhead Screw, SKT HD, M8x35LG, SS | 1 |
| 4 | NUT_NYLOC_HEX_M8_SS | Nut, Nyloc, Hexagon, M8, SS | 1 |
| 5 | PRT1453 | Spring, Torsion, Smart® Band Fitting Tool | 1 |
| 6 | PRT1454 | Pawl Gripping, 13mm | 1 |
| 7 | PRT1085 | Spring, Torsion, Smart® Band Fitting Tool, 19mm | 1 |
| 8 | PRT1452 | Pin, Ø5x30LG | 1 |

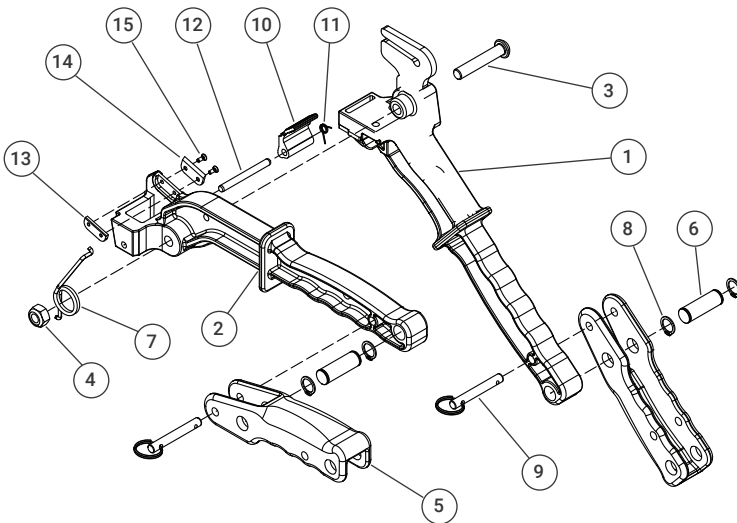
IMPORTANT

If using the SM-FT-2000-13 tool in conjunction with 7mm Smart® Band, care should be taken not to over tighten the system. Excessive tightening may result in band failure.



SM-FT-2000-19

| Item | Part Number | Title | Qty |
|------|----------------------|-------------------------------------------------|-----|
| 1 | ASM1030 | Fixed Handle, Overmoulded Assembly, 19mm | 1 |
| 2 | ASM1032 | Moving Handle Assembly, 19mm | 1 |
| 3 | BHS_M10X55_SS | Buttonhead Screw, SKT HD, M10x55LG, SS | 1 |
| 4 | NUT_NYLOC_HEX_M10_SS | Nut, Nyloc, Hexagon, M10, SS | 1 |
| 5 | PRT1075 | Spring, Torsion, Smart® Band Fitting Tool | 1 |
| 6 | PRT1072 | Pawl, 19mm | 1 |
| 7 | PRT1085 | Spring, Torsion, Smart® Band Fitting Tool, 19mm | 1 |
| 8 | PRT1074 | Pin, Ø5x36LG | 1 |
| 9 | PRT1070 | Blade, Cutting | 1 |
| 10 | PRT1506 | Blade, Clamp Plate | 1 |
| 11 | CSK_M3X8_SS | Countersunk Screw, SKT HD, M3x8LG, SS | 2 |



SM-FT-2000-32

| Item | Part Number | Title | Qty |
|------|----------------------|-------------------------------------------------|-----|
| 1 | ASM1084 | Fixed Handle, Overmoulded Assembly, 32mm | 1 |
| 2 | ASM1085 | Moving Handle, Assembly, 32mm | 1 |
| 3 | BHS_M10X55_SS | Buttonhead Screw, SKT HD, M10x55LG, SS | 1 |
| 4 | NUT_NYLOC_HEX_M10_SS | Nut, Nyloc, Hexagon, M10, SS | 1 |
| 5 | PRT1344 | Extension Handle | 2 |
| 6 | PRT1354 | Pivot Pin | 2 |
| 7 | PRT1075 | Spring, Torsion, Smart® Band Fitting Tool | 1 |
| 8 | CIR_EXT_014_SS | Circlip, External, Ø14, SS | 4 |
| 9 | PRT1356 | Detent Pin, WDS-957-20840 | 2 |
| 10 | PRT1347 | Pawl, 32mm | 1 |
| 11 | PRT1368 | Spring, Torsion, Smart® Band Fitting Tool, 19mm | 1 |
| 12 | PRT1348 | Pin, Ø6x60LG | 1 |
| 13 | PRT1506 | Blade, Clamp Plate | 1 |
| 14 | PRT1070 | Blade, Cutting | 1 |
| 15 | CSK_M3X8_SS | Countersunk Screw, SKT HD, M3x8LG, SS | 2 |

HCL – UK & Rest of the World

Tel: +44 (0)1761 417714
 Fax: +44 (0)1761 417710
 Email: sales@hcl-clamping.co.uk

HCL – North America

Tel: 281-717-1145
 Fax: 281-717-1146
 Email: sales@hcl-clamping.com

Visit www.hclfasteners.com to view our complete range of products.

November 2020

