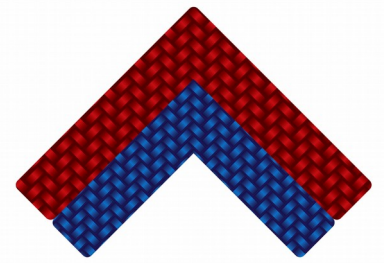




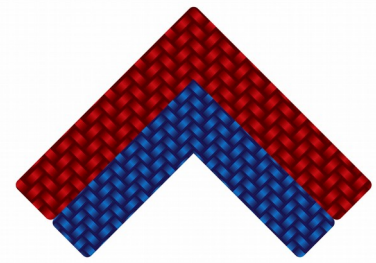
**ALD TECHNICAL SOLUTIONS  
COMPOWRAP™ TECHNOLOGY  
OVERVIEW**

# OUTLINE

- **Introduction**
- **Services**
- **Product Line Overview**
- **Chemical Compatibility and Durability**



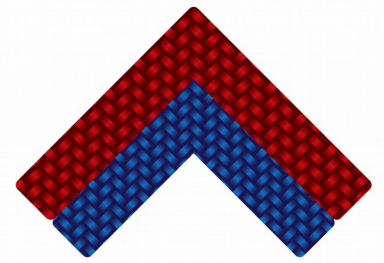
# INTRODUCTION



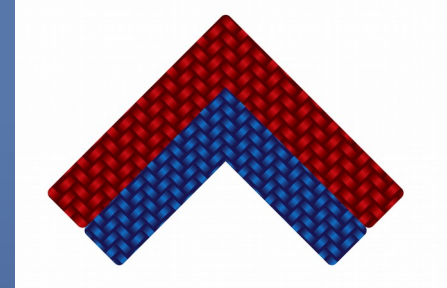
**ALD Technical Solutions provides cost effective innovative solutions to repair, retrofit and upgrade offshore and onshore infrastructures using high-quality and high-performance composite materials. Advantages of ALD Technical Solutions Composite Wrap include:**

- **High Strength with lower weight**
- **Easier and faster installation compare to alternative methods**
- **Corrosion resistance and more durable**
- **Thermal compatibility**
- **Low total cost compare to conventional methods**
- **Minimal operational downtime**
- **Applicable to any substrate: concrete, steel, wood, fiberglass**

# SERVICES



# PRODUCT LINE OVERVIEW



## Carbon Fiber Composite Systems

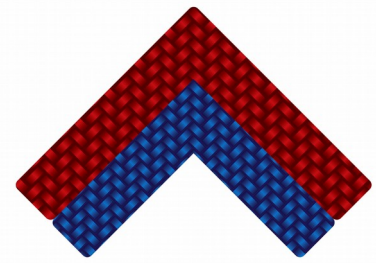
Fabric	Type	Properties (US Unit)	Properties (Metric Unit)
UDC10	Unidirectional	10 oz/yd <sup>2</sup> - 2" to 48" width	339 g/m <sup>2</sup> - 2.5 cm to 121.92 cm
UDC20	Unidirectional	20 oz/yd <sup>2</sup> - 2" to 48" width	678 g/m <sup>2</sup> - 2.5 cm to 121.92 cm
BDC10	Bidirectional	10 oz/yd <sup>2</sup> - 2" to 48" width	339 g/m <sup>2</sup> - 2.5 cm to 121.92 cm
BDC20	Bidirectional	20 oz/yd <sup>2</sup> - 2" to 48" width	678 g/m <sup>2</sup> - 2.5 cm to 121.92 cm

## Galvanic Corrosion Protection Systems

Fabric	Type	Properties (US Unit)	Properties (Metric Unit)
BDG05	Glass Fabric Bidirectional	5 oz/yd <sup>2</sup> weight 38" width	170 g/m <sup>2</sup> weight 2.5 cm to 121.92 cm

# PRODUCT LINE OVERVIEW

## Epoxy Resins Systems

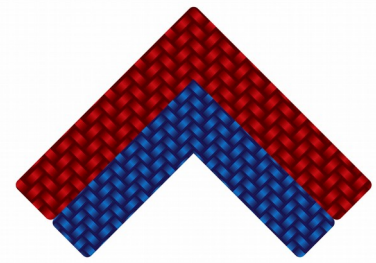


<b>Epoxy Resin</b>	<b>Application</b>	<b>Purpose</b>
StrongBond™ 200 Adhesive Putty System	Typical Conditions	Adhesive Putty as a Filler and Load Transfer System
StrongBond™ 200-UW Adhesive Putty System	Underwater	
StrongBond™ 200-HT Adhesive Putty System	High Temperature	
StrongBond™ 400 Saturant Resin System	Typical Conditions	Saturant Resin to Saturate Fabrics
StrongBond™ 400-UW Saturant Resin System	Underwater	
StrongBond™ 400-HT Saturant Resin System	High Temperature	
StrongBond™ Topcoat System	UV resistance	UV Coating

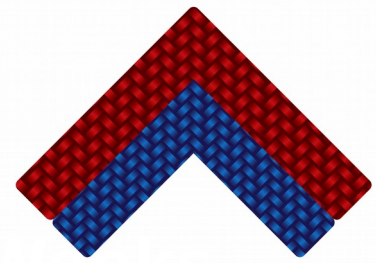
# PRODUCT LINE OVERVIEW

## Small Repair/ Emergency Repair Kits

- **CompositeWrap™ Kit is 4-part system (Carbon Fabric, Glass Fabric, Epoxy Resin and Adhesive Putty) including all necessary consumables, guideline, product technical information and safety data sheets specially designed for easy installation to retrofit and structural reinforcement of any pipe size with any configurations.**



# CHEMICAL COMPATIBILITY



**StrongBond™ 430 Saturant Resin System; (3 Weeks)**

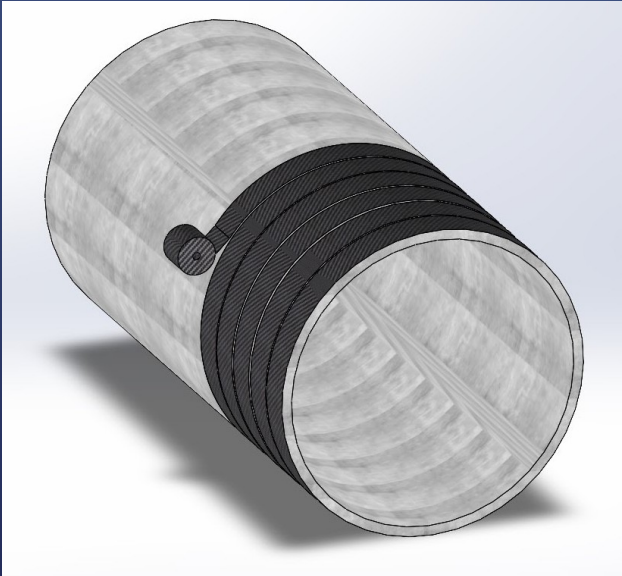
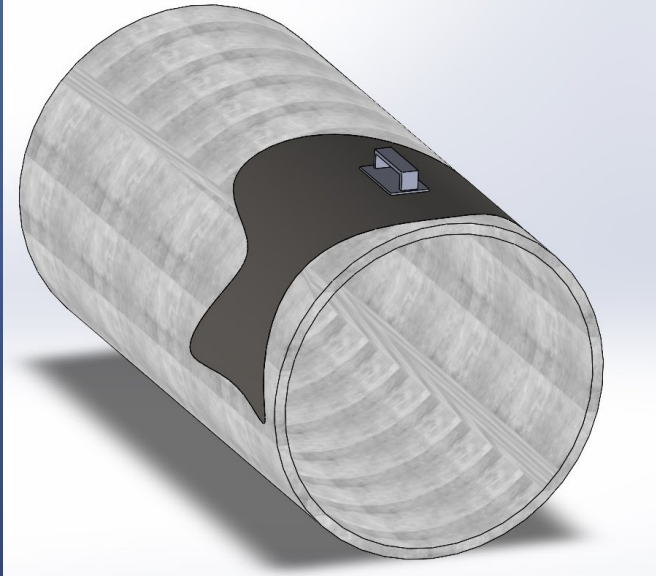
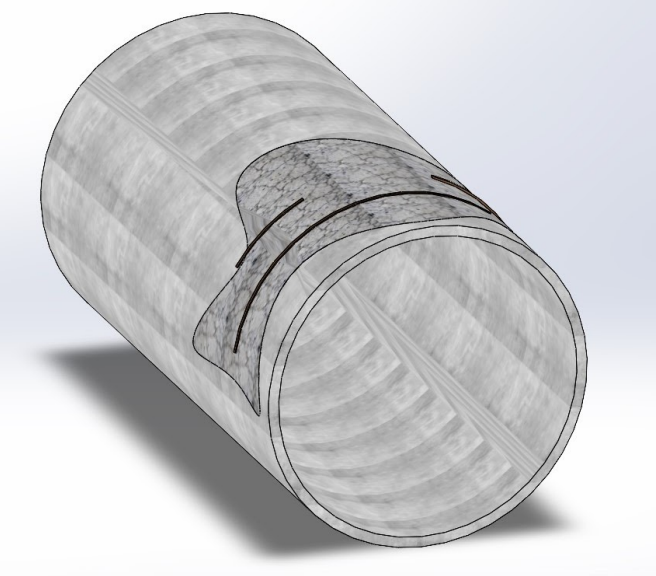
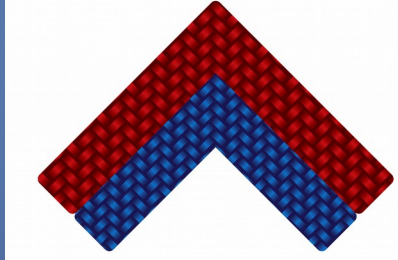
<b>Reagent</b>	<b>% Weight Loss</b>
Xylene	0.0
Toluene	2.3
1,1,1 Trichloroethane	0.0
MEK	2.3
Ethylene Glycol Monobutyl Ether	2.4
Ethyl Alcohol	6.9
Water (Deionized)	1.2
5% Detergent Solution	0.0
10% Sodium Hydroxide	0.0
50% Sodium Hydroxide	0.2

<b>Reagent</b>	<b>% Weight Loss</b>
10% Sulfuric Acid	1.1
70% Sulfuric Acid	1.8
10% Hydrochloric Acid	0.1
5% Acetic Acid	2.6
10% Acetic Acid	5.4
Skydrol	0.03
Synthetic Gasohol	0.0
Mogas Diesel	0.0
JP-4, JP-5, JP-7, JP-8	0.0
Diethylene Glycol Monoethyl Ether	0.0



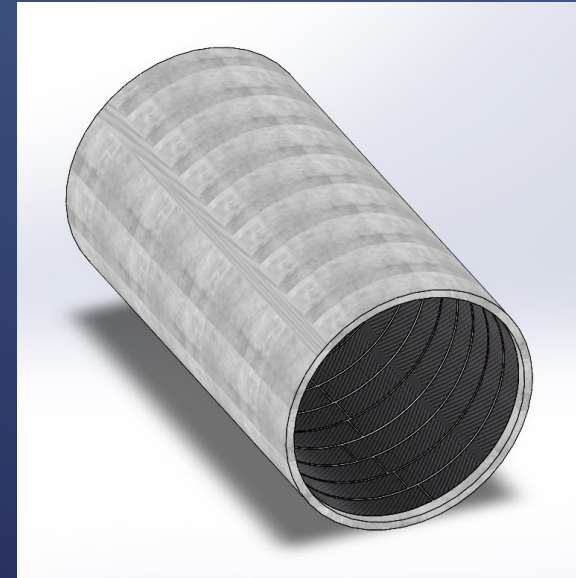
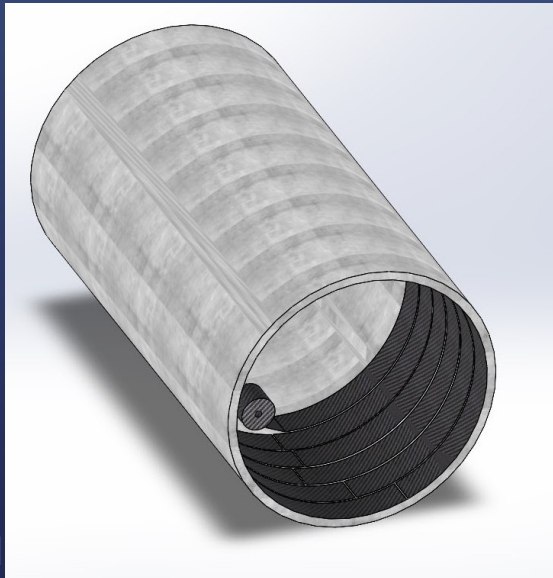
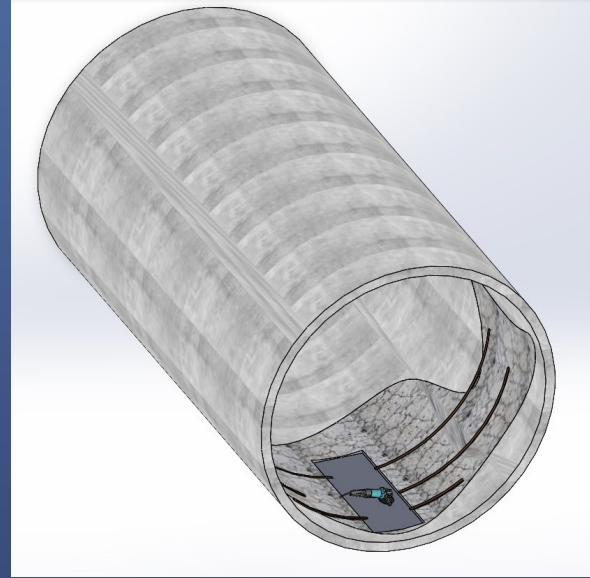
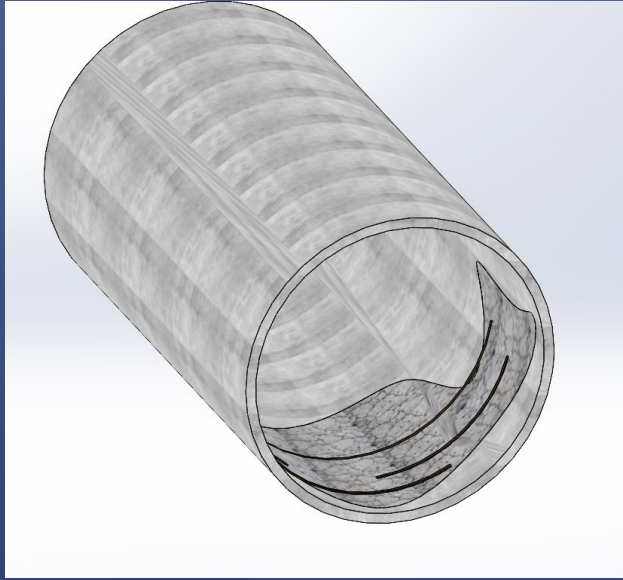
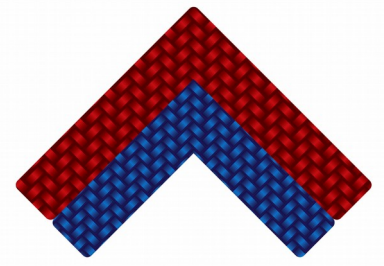
# POTENTIAL APPLICATIONS

## EXTERNAL CONCRETE PIPE REPAIR



# POTENTIAL APPLICATIONS

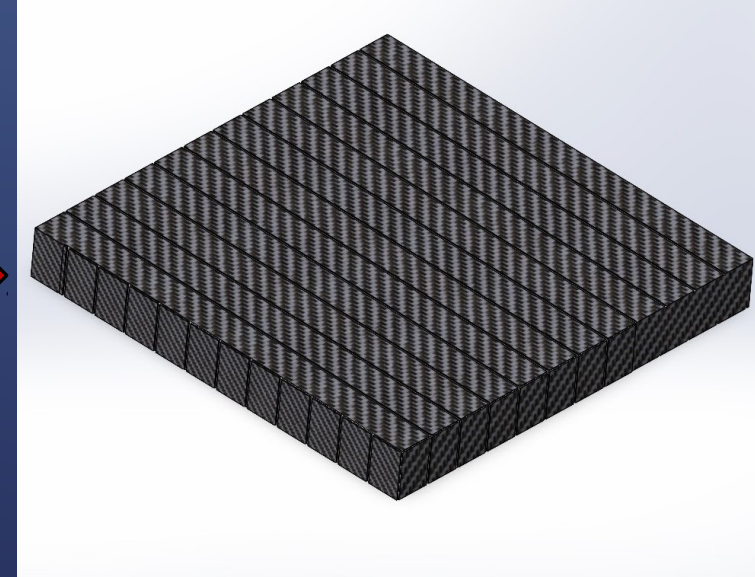
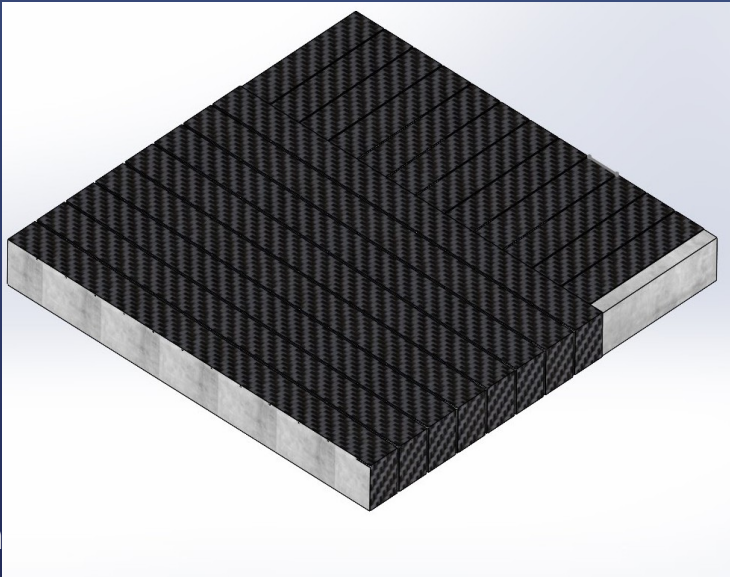
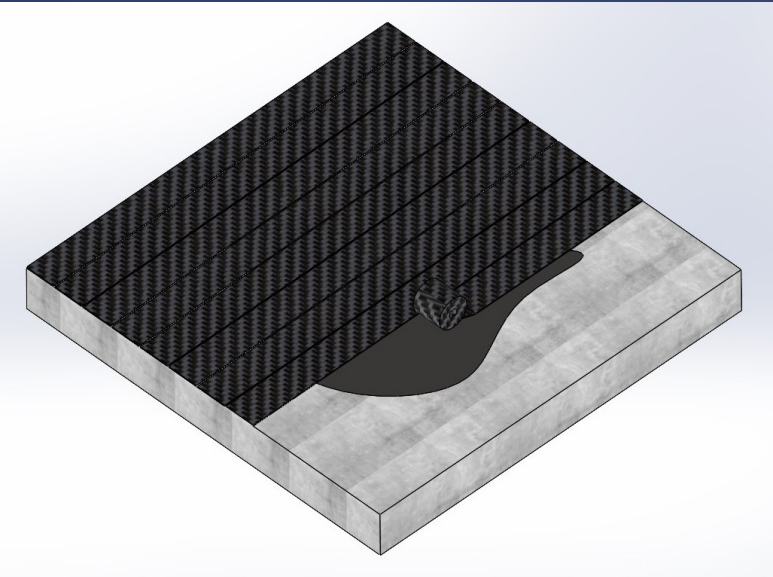
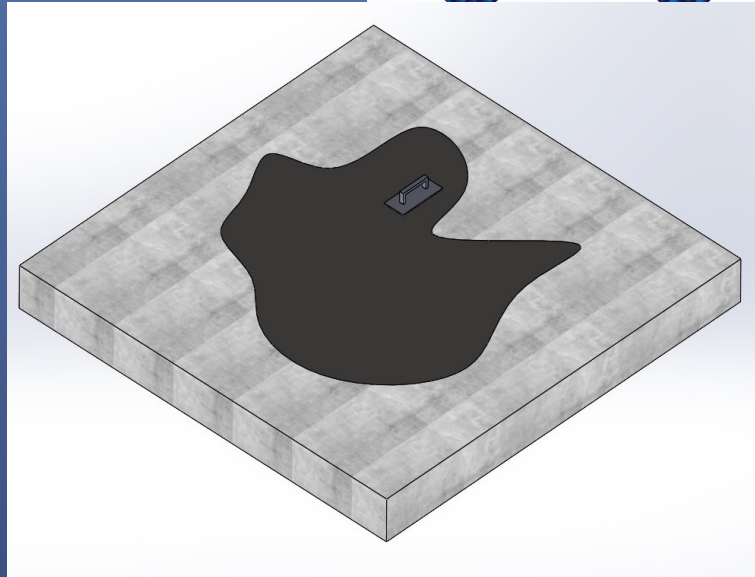
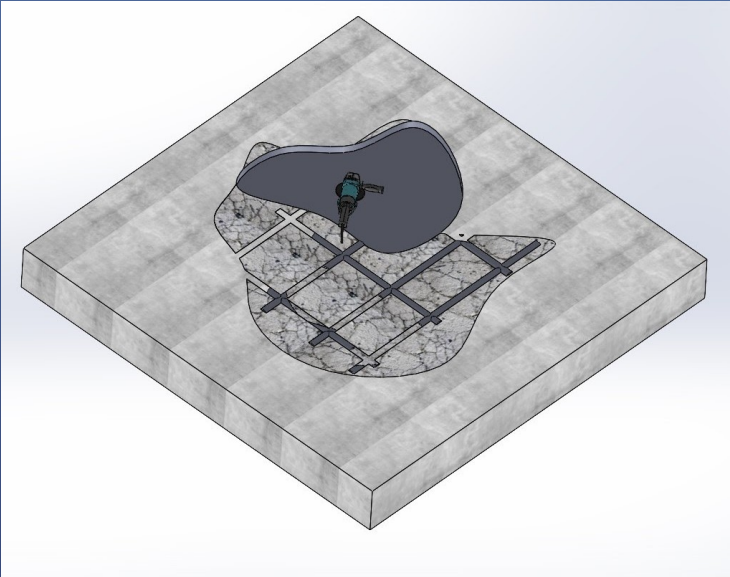
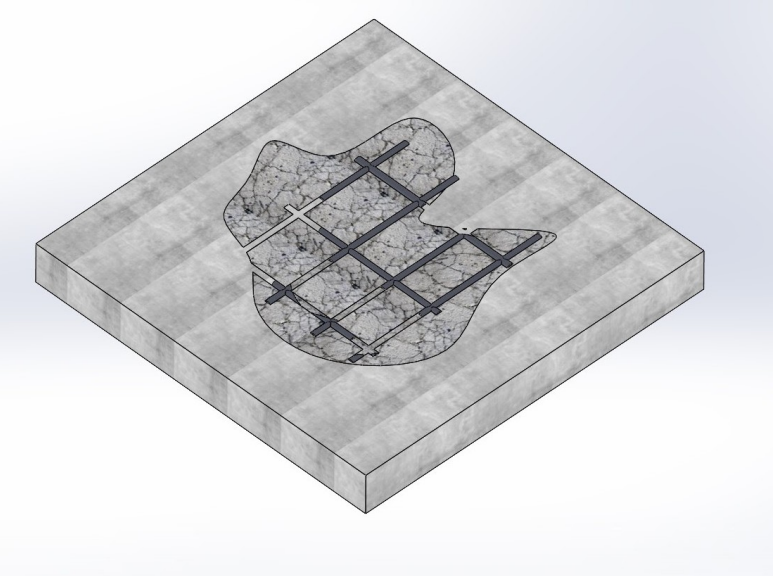
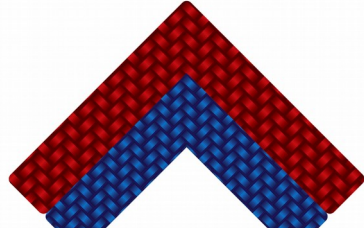
## INTERNAL CONCRETE PIPE REPAIR



Innovative Composite Material

# POTENTIAL APPLICATIONS

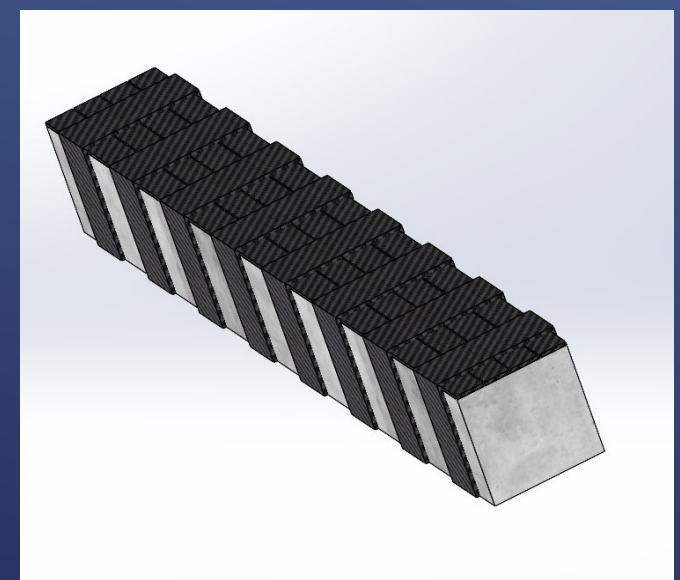
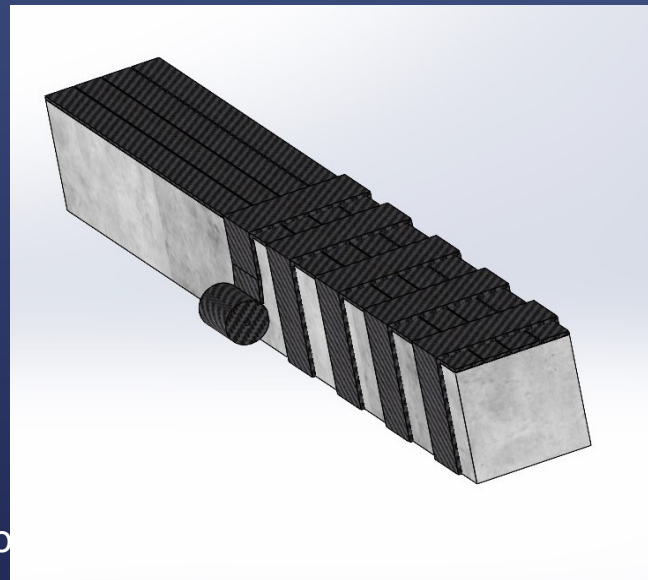
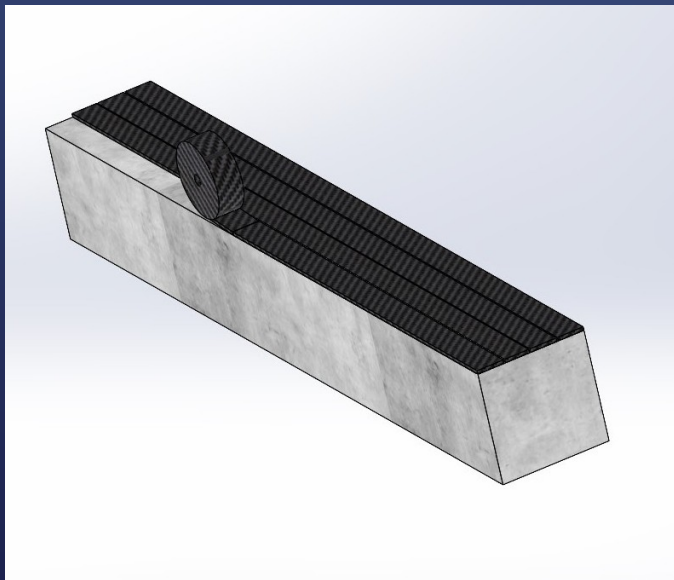
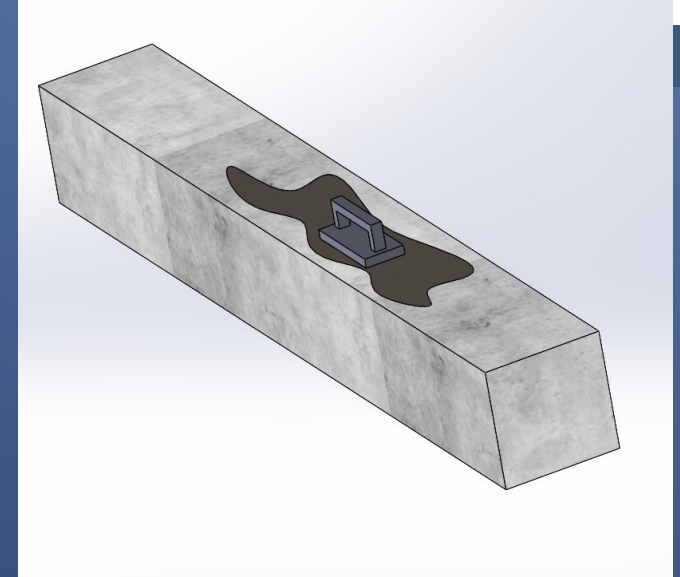
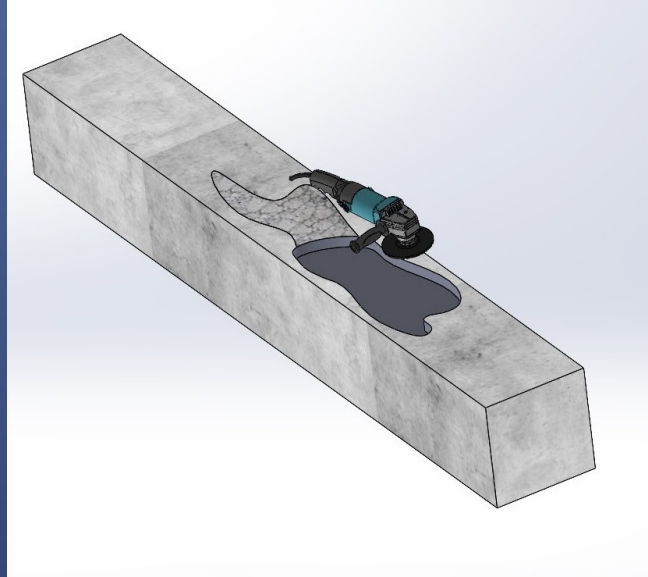
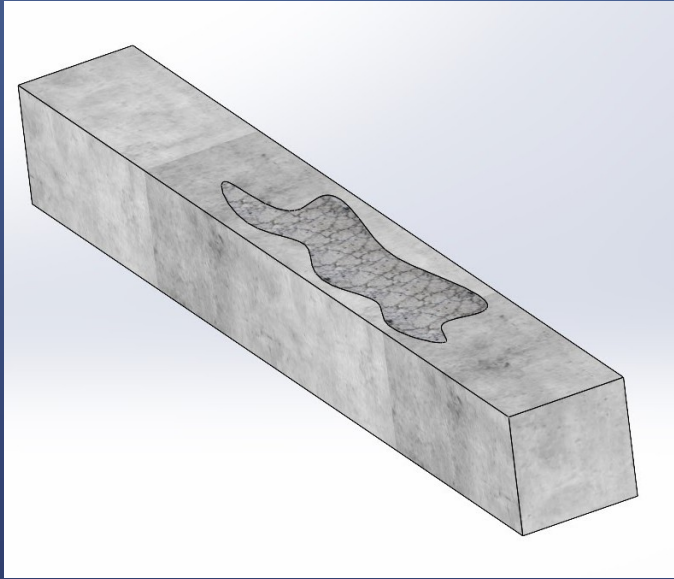
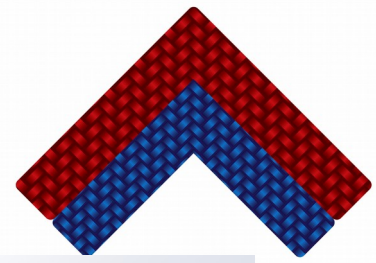
## CONCRETE SLAB REPAIR



solution

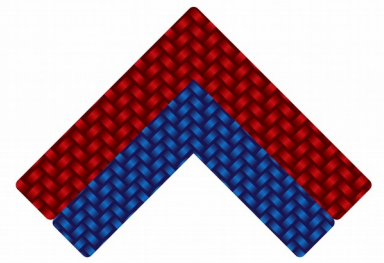
# POTENTIAL APPLICATIONS

## CONCRETE BEAM REPAIR



d Solution

# Q&A



## Contact Info:

**Phone: +1 413 357 4481**

**Email: [info@aldtechnicalolutions.com](mailto:info@aldtechnicalolutions.com)**